

Area Assembly — The Area Assembly meets regularly within its respective state and is responsible for electing an Area Delegate who will attend the General Service Conference. Information that is brought back from the General Service Conference is discussed at these meetings and taken up the chain of communication to the CMA Groups. The Area Assembly is also charged with selecting Regional Trustee nominees when those positions become vacant.

Area Delegate — The Area Delegate is the voice of the Area fellowship at the General Service Conference. That person is the direct link between the General Service Conference and the CMA Groups within their Area. They inform the General Service Conference of what is happening on the local level and conversely, bring information to the CMA Groups about what business is happening at General Services.

Regional Trustee — The Regional Trustee is recommended to the Board of Trustees by the Areas within a geographical region (Mid Atlantic Region, Pacific Region, etc.). They are approved at the General Service Conference. Once on the Board they are entrusted with serving CMA as a whole rather than only the interests of the region from which they came.

General Service Conference — This is the annual assembly of the service body for Crystal Meth Anonymous. Because it is made up of Area Delegates as well as the Board of Trustees and the General Service Committee, it is considered the voice of the fellowship. This is where the General Service Committee and the Board of Trustees get their direction from the fellowship at large.

General Service Committee/Board of Trustees — Within the General Service Committee are Advisory Committees. These committees do the day to day service work for Crystal Meth Anonymous. These committees of

trusted servants handle issues like coordinating the writing and printing literature and maintaining the website. The Board of Trustees and its committee, the Executive Committee handle the day to day business needs of CMA. They take care of the legal requirements which every corporation must comply.

Our Fellowships' structure is referred to as an inverted pyramid with the groups at the top and General Services at the bottom. All of the trusted servants in between work tirelessly to make sure that the structure is in place to facilitate the transmission of the message of recovery to every addict that walks into a meeting of Crystal Meth Anonymous. In all these categories of service, there must be a two way flow of information as well as the constant observation of the 12 Steps, 12 Traditions, and the 12 Concepts of World Service.



CMA Conference Approved Literature

©2023 Crystal Meth Anonymous
1920 Hillhurst Ave #1315
Los Angeles, CA 90027
crystalmeth.org

CMA Helpline - (855) 638-4373

7.18.2023

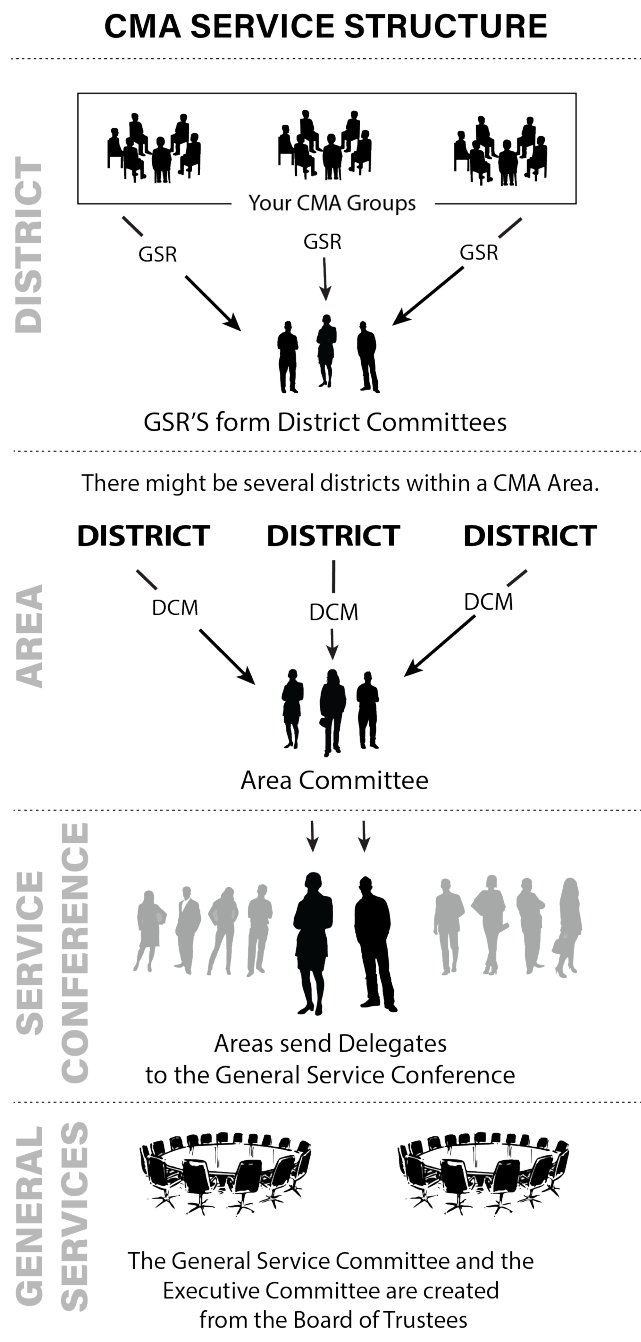
CMA SERVICE STRUCTURE

Crystal Meth Anonymous

AS A 12-STEP FELLOWSHIP, CMA RELIES ON ITS SERVICE STRUCTURE TO KEEP OUR COMMUNITY CONNECTED AND GROWING.



As a developing 12-step fellowship, CMA relies on its service structure to keep our community connected and growing. The service structure has been set up to facilitate communication and the smooth functioning of the work that is done to fulfill our primary purpose. It has also been designed to allow for growth in all of the diverse areas that CMA serves. Whether you are in a location that has a vibrant multi-leveled structure or in one that has only a few meetings, there is a direct line from you to CMA General Services. This pamphlet is designed to be a basic outline of the overall service structure of CMA. You can refer to the CMA Service Manual for more detailed information.



Groups/Meetings — This is the level that most of us are familiar with. The meetings that we all attend are the most important part of the service structure. Every other level of service exists in order to help these Groups or Meetings stay connected and grow. The Group also has the voice with the most impact in CMA. The voice of the Group is determined by its group conscience and communicated by its General Service Representative (GSR). It is transmitted through the GSR to the next level of service, the District.

District — A District is a collection of individual meetings that each send a GSR to form a local committee. This District Committee meets regularly to transmit the groups' voice down the service structure and to bring back any business or news from its Area or CMA General Services. The size of the District is usually determined by the number of meetings in that given location and the local geography. Most large cities have one or more Districts that connect all of the meetings in that metropolitan region. The Districts first function is to be part of the communication chain that connects each group with the next level of service down the line. There is also a service entity called an Intergroup. These are sometimes synonymous with the District and sometimes are outside of the service structure and are not part of the communication between the Group and General Services.

Area — The Area is the next level of service within CMA. Each Area corresponds to a single state or province within North America. The Area may contain several Districts. Each District sends a representative called a District Committee Member (DCM) to the Area Assembly. Others that gather for these statewide Area Assemblies are individual GSR's, other meeting officers, the Area Delegate to the General Service Conference, the Regional Trustee or even individual members of the fellowship. In this way, information is passed from the local districts on to CMA General Services and vice-versa.